



UNITED WAY
North Central New Mexico

2025 Annual Report



UNITED IS THE WAY™
FORWARD

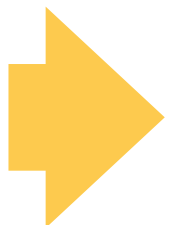


Table of Contents

1	A Letter From Our Leaders	28	Our Five Counties	48	Tocqueville Society Members
2	Direct Services	32	Mosaic Celebration	60	Planned Giving
5	Community Impact, Rising Together	33	Day of Caring & Volunteering Opportunities	62	In Memoriam
10	Community Outreach & Partnerships	34	Donor Groups	63	Board of Directors
13	Community Investments	38	Rising to Meet the Future Endowment Campaign	64	Looking to 2026
15	Community Investment Grants	40	2024–25 Corporate Cornerstone Companies		
22	DEI United	42	Impact Investors		
24	ALICE in New Mexico				
26	Financial Year in Review				



..... A LETTER FROM OUR LEADERS

As we reflect on the past year, we are filled with immense pride and gratitude for the incredible progress we have made together. Our mission at United Way of North Central New Mexico (UWNCNM) is driven by the spirit of collaboration and community, and this year has been a testament to that.

Celebrating Our Achievements and Initiatives

In 2025, we continue to build on the successes of our 90th anniversary, a milestone that highlighted our enduring commitment to the community. Our programs, including the 211 Helpline, Family Advocacy Center, and Tax Help New Mexico are lifelines for many, providing essential support to those in need. These programs continue to help thousands of individuals and families navigate challenges and improve their quality of life.

As we move forward, our focus remains on fostering strong communities and ensuring that every individual and family has the support they need to thrive. Our new initiatives, such as the Academies of Albuquerque, ALICE (Asset Limited, Income Constrained, and Employed), and Resilient Communities are designed to address the unique challenges faced by our community and create sustainable systemic change.

Resilient Communities, highlighted in the documentary “The Gift of Trust,” showcases UWNCNM’s innovative trust-based philanthropy project, developing true partnerships with community agencies and the transformative impact of trust-based grant-making.

UNITED IS THE WAY

This call to action invites all people and communities to come together and make a bigger impact. We believe that by working together, we can reach a future where everyone thrives.

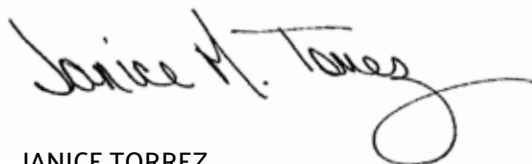
We are deeply grateful to our donors, partners, and volunteers for their unwavering support. Your generosity and commitment have been instrumental in advancing our mission and supporting the individuals and families we serve.

Thank you for being a part of our journey.

Sincerely,



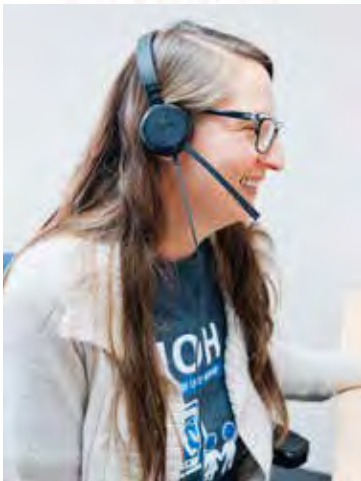
RODNEY PRUNTY
President and CEO
United Way of North Central New Mexico



JANICE TORREZ
Chair, 2025–26 Board of Directors



What We Do: Direct Services.....



211 is an information and referral helpline that connects callers with human services in the five-county area UWNCNM serves as well as Catron, Cibola, McKinley and Socorro counties. Usage of this service increased tremendously, reflecting both increased needs and efforts to inform the community about 211.

	Calls Answered	Referrals
2022	5,155	9,648
2023	10,713	16,588
INCREASE	107%	72%
2024	19,298	21,396
INCREASE	80%	29%



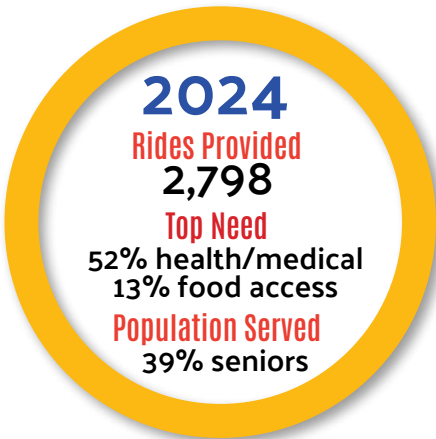
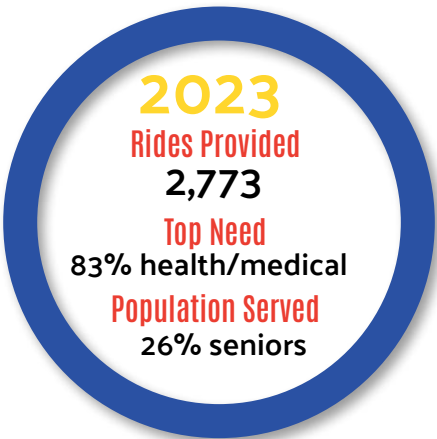
Caller's Top Needs

- 1 Rent assistance
- 2 Utility assistance
- 3 Tax Help
- 4 Homeless hotel vouchers
- 5 Homeless shelters

RIDE UNITED Transportation Access

Ride United provides free transportation in Santa Fe County for people to access critical services, such as doctor appointments or a job interview. Residents without access to a vehicle or public transportation can request a ride by calling 211. These rides can be used for any need-related service, including health, food, shelter/housing, employment, education or legal services.

Ride United costs \$6,000 a month to operate. Gifts to support this valuable program can be made at: www.uwncnm.org.



Many people who utilize Ride United are seniors, just like 65-year-old Curtis. He requested a ride to travel to **Bienvenidos Outreach**, a nonprofit serving homeless and limited income families. Curtis wanted to apply to **Bienvenidos'** rental assistance program. Since he had never used a ride service before, United Way's 211 Community Navigator talked him through the process and scheduled rides for Curtis to and from **Bienvenidos**, where he completed the paperwork needed to receive financial assistance, increasing his ability to remain in his home.

Tax Help New Mexico offers free tax preparation services to New Mexico households with an annual income of \$67,000 or less. Tax Help relies on 190 volunteer tax preparers who work at 23 regional sites. **In 2024, they completed 9,433 returns, resulting in \$16.2 million in refunds/credits returned to New Mexicans**, which allows families to build their financial stability and contributes to New Mexico's economy.



Tax Help NM also offers **Money Matters**, a financial education program supporting family stability. **These free, FDIC approved courses teach participants how to manage their money and make smart decisions about saving and planning for retirement.** The Money Matters core curriculum includes budgeting basics, smart credit management, banking and borrowing. These one-hour sessions are offered online or in person. The curriculum can be customized based on specific needs, such as adding additional topics around small business, buying a home or managing debt.

To learn about volunteering with Tax Help, call **505-750-3885** or visit our website at TaxHelpNM.org.

	Returns Processed	Refunds/ Rebates
2022	7,300	\$15.9 Million
2023	9,433	\$16.1 Million
2024	9,483	\$16.2 Million



Laundry Love

offers free monthly laundry sessions to families who are struggling financially.



With a washer load at a laundromat averaging \$8, and the increased cost of detergent, the financial burden can be difficult. Access to clean clothes provides people with dignity and improves children's school attendance.

The value of services and supplies provided to 310 families in 2024 totaled **\$27,000**. UWN CNM supports fundraising for Laundry Love in cooperation with SHINE Partnership. We are deeply grateful to Hilario and Monica Arroyo for hosting Laundry Love at their business, Arroyo Services Lavanderia.

	Families Served	Washer Loads	Dryer Loads
2022	180	1,080	2,460
2023	260	1,543	3,286
2024	310	1,825	3,650

What We Do: Direct Services



Family Advocacy Center (FAC)

Nationally, one in three women and one in seven men are victims of some form of domestic violence, which means that in the Albuquerque metro area, approximately 80,000 women and 30,000 men are victims of domestic violence each year. In 2024, the youngest client served at FAC was two months old. The oldest client was 89.

More than 5,900 people sought services at FAC last year. Victims need a wide array of supports, like shelter, food and clothing, physical safety, physical and mental health attention, advocacy and legal support, and ultimately opportunities for sustainable, positive change. **FAC mitigates the effects of domestic violence and strengthens the path to resiliency.**

We are grateful for the partners who offer their services as the FAC including the Albuquerque Police Department and the following agencies: Domestic Violence Resource Center, NM Children, Youth & Families Department, NM Legal Aid, NM Rape Crisis Center, Para Los Niños, Sexual Assault Nurse Examiners.



Franklin Wilson, founder of the Foundation for Sustainable Living, became a supporter of the Family Advocacy Center (FAC) in 2018 with a \$500 donation to purchase peanut butter for the food pantry. His interest in FAC's mission to provide victims of domestic violence with services to address and overcome the trauma of their experience continued to grow over the years. In 2024, Franklin established an endowment of \$75,000 to support FAC's mission in perpetuity.

Inspired by Franklin's generosity, UWNCNM's Guys Give Donor Group added a gift of \$10,000 to the new endowment, bringing the total to \$85,000! Franklin's and Guys Give's foresight will allow the FAC to provide its crucial, free confidential services in perpetuity.

Learn more about how the Family Advocacy Center supports survivors of domestic violence at uwncnm.org/fac.

To make a gift to FAC's endowment, go to: give.uwncnm.org/FAC.



What We Do: Community Impact

-
-
-
-
-
-

RISING TOGETHER

Supported by:

The Corio Foundation



In addition to direct services, the Impact team works on projects that deliver collective impact to the communities of north central New Mexico.

In 2024, the **Rising Together** team, supported by advisory groups of community leaders, the Vision Council and Albuquerque Career Connect, continued its commitment to improving Pre-K–12th grade school attendance and graduation rates, housing stability and community health and safety.

Rising Together deepened its work in education to promote post-secondary readiness through community-driven, work-based learning opportunities by establishing ABQ Career Connect (middle school programming) and the Academies of Albuquerque in high schools.

ACADEMIES OF ALBUQUERQUE

United Way and Albuquerque Public Schools (APS) are partnering so that every student has access to career-focused learning and real-world opportunities, ensuring they graduate ready for college, careers and life. With a high school graduation rate of 72%, (below the national average of 87%) and low higher education enrollment rates, APS students face barriers that limit their ability to thrive in today's economy. Graduates often lack the preparation, guidance and structured pathways needed to transition into higher education, vocational training, or high-wage careers.

To address this challenge, APS and United Way will implement the Academies of Albuquerque to integrate career-focused learning into high school curricula for every student. **This model is successful throughout the U.S., leading to higher engagement, improved school attendance and increased graduation rates.**

This proven framework strengthens academic achievement, career readiness and higher education enrollment by integrating education with industry and post-secondary partnerships. With UWN CNM's commitment to improving economic mobility and educational outcomes, this initiative aligns perfectly with our goal to increase high school graduation rates and post-secondary success.

Watch for updates throughout the 2025-26 school year as the Academies of Albuquerque kicks off at Cibola, Highland and Manzano high schools.



Supported by:

BANK OF AMERICA

What We Do: Community Impact.....

K-12 LEARNING: ATTENDANCE & ENGAGEMENT

UWNCNM's Attendance Team Support Group collaborates with the New Mexico Public Education Department (NMPED) to present annual statewide conferences for school-based attendance teams. In May 2025, over 500 school staff and students attended the statewide attendance conference.

UWNCNM also partners with NMPED to present virtual workshops to address the needs of attendance teams in between conferences.

The Attendance Team Support Group also partners with APS to offer two annual APS-specific conferences that support APS attendance teams as they create and implement their statewide attendance improvement plans.

A major attendance topic in 2024–25 for all conferences was the importance of developing relationships with students and families as an important factor in reducing barriers to attendance.

In total, 56 districts and over 150 schools participated. 93% of survey respondents said that after the conference, they felt positive about the direction of their attendance work and 97% of survey respondents agreed that, after the conference, they felt their school is more prepared to start their attendance strategies next school year more quickly.



COLLEGE/CAREER READINESS



Valencia County Partnership for a Work Ready Community

This partnership aims to create a shared understanding of employers' needs so students can be better prepared for all possible opportunities after high school.

Since its inception in 2017, the Partnership has worked with over 7600 students, 104 teachers and 92 businesses. Projects include resume writing workshops, mock interviews, Why I Work seminars, employer presentations, and student videos of career exploration in Los Lunas and Belen public schools.

In the annual Summer Teacher Academy, employers present to teachers on the skills they look for when hiring. Participants come from Belen, Los Lunas, School of Dreams Academy and Moriarty Edgewood schools. In 2024, 80 teachers attended the event and 100% of survey respondents agreed that after the conference they have a better understanding of some of the skills employers are looking for in graduates and 100% agreed that they have a better understanding of their role in helping students to gain those skills.

The Summer Teacher Academy is expanding in 2025 to include all five counties that United Way serves.



What We Do: Community Impact.....

ABQ CAREER CONNECT

ABQ Career Connect increases middle school students' knowledge about science, technology, engineering, arts and mathematics (STEAM) careers. An advisory group of business, nonprofit, government and education leaders partners with United Way of North Central New Mexico to bring career exploration events to middle school students. **These events target 8th-grade students, helping them gain valuable insights into STEAM careers and motivating them to explore future opportunities as they transition to high school.**

ABQ Career Connect increases career exploration opportunities for middle schools which articulates to the Academies of Albuquerque methodology in the high schools. The primary criterion for selecting schools is their math proficiency scores to ensure equitable access to career exploration resources. The initial focus is on middle schools in Bernalillo County, with the potential to expand to other areas.



HOUSING STABILITY

When children are homeless, the stress, trauma and academic disruptions they experience often lead to problems in school – problems that can continue throughout life. Data tells us that students impacted by housing instability often encounter chronic absenteeism, missing out on learning opportunities which can be difficult to recover from. For example, *missing ten percent or more school days can translate into third graders unable to master reading, sixth graders failing subjects and ninth graders dropping out of high school (NM Public Education Department).*



When families have stable housing, they are better positioned to achieve their educational goals, leading to better long-term employment and health outcomes.

UWNCNM delivers a two-generation approach to family well-being in partnership with the Siemer Family Foundation, United South Broadway and the Veterans Integration Center through a preventative program for families who are one emergency away from becoming homeless. Families enhance valuable skills that contribute to self-efficacy, such as financial literacy and resource attainment. This leads them to experience stability and thrive, a key outcome for Rising Together. **In 2024, 59 families were served.**



Through the generosity of the Siemer Family Foundation, housing case managers receive technical training to help families at risk of homelessness discover solutions and resources that provide dignity and safe housing.

What We Do:

Community Outreach & Partnerships . . .

RURAL COUNTIES

The Community Outreach & Partnerships team ensures that United Way’s programs are extended to the rural areas that UWNCNM serves. **The team collaborates with agencies, coalitions and neighborhood groups on topics like health and food access, neighborhood revitalization, homelessness, housing needs and youth development.** In addition, UWNCNM is a leader in convening partner agencies around shared concerns and community-based solutions.

An advisory council of volunteers living in Sandoval, Torrance and Valencia Counties works with staff to identify the needs of rural areas and to increase funds awarded to rural counties. If you live in one of these counties and are interested in this work, contact Tierra Hudson at tierra.hudson@uwnncnm.org.



2024 Rural Counties Fund

This fund is dedicated to rural areas that often don’t have access to charitable dollars. **Rooted in trust-based philanthropy, the grants are unrestricted to allow agencies to put the dollars to work where they will be most effective.**

The Partnership for Healthy Torrance Community collaborates with WAVES Behavioral Health to provide in-person counseling for youth in that community. In-person therapy did not exist in Torrance County prior to this project. In 2024, WAVES served 47 clients with a total of 490 counseling sessions, an average of 8 sessions per client. Youth served range in age from four to seventeen. Clients lived in Moriarty, Estancia, Tijeras and McIntosh.

Sandoval County		
St. Felix Pantry	Haven House	Seed to Need
\$40,000	\$20,500	\$7,500
Torrance County		
WAVES Behavioral Health		
\$25,000		
Valencia County		
Valencia County Literacy Council		
\$10,000		
Valencia County Action Network		
\$10,000		

RESILIENT COMMUNITIES

United Way is partnering with organizations in Santa Fe and Valencia Counties on projects that seek to improve community self-reliance by creating new economic models. **An investment totaling \$3 million over three years in these two counties will allow the partner agencies to focus on systems changes that increase economic autonomy.**

Funded by a private foundation, Resilient Communities imagines new systems that equally prioritize material and non-material needs, so that community members can foster self-reliance. Advisory councils of county residents selected the grantees following the principles of trust-based philanthropy. The funded projects will contribute to solving specific challenges that neighborhoods and communities face.

Santa Fe County

Bienvenidos provides hydroponic grow towers for housed and low-income clients, with training in cultivating herbs and vegetables and care for the towers.

\$300,000 over three years

EarthCare's La Milpa establishes family, neighborhood and entrepreneurial food consciousness through education and an action program supporting existing food sovereignty efforts for the population on the Airport Road corridor, a food desert.

\$300,000 over three years

Farmers Market Institute's Local Food for All is a mobile farmers' market, selling local produce at cost. The refrigerated trailer weekly visits elders' centers, schools and low-income housing areas in underserved parts of town.

\$300,000 over three years

Mother Nature Center is developing a food sovereignty curricula for elementary students, youth groups and teacher training; a seed library and tool-borrowing program. They will also record stories from elders and other knowledge keepers.

\$300,000 over three years

Santa Fe Indigenous Center distributes food for the urban Native and non-Native population and provides classes in traditional arts and provides job-placement services.

\$300,000 over three years



Full Circle Farm

A garden created from ancestral seeds is the foundation for educational activities including seed/food processing at a women-run farm where young people learn Native traditions in growing, processing and storing traditional crops.

\$300,000 over three years

Poeh Cultural Center, The Answers Are Within Us revitalizes agriculture processes with the Pojoaque Pueblo community and provides culinary workshops utilizing traditional food methods to support community wellness.

\$225,000 over three years

What We Do:

Community Outreach & Partnerships

RESILIENT COMMUNITIES

Valencia County

Cotton Blossom Gardens connects local students to Native traditions by bringing them to the farm for education in growing, harvesting and preparing food.

\$175,000 over three years

Valencia Community Action Network plants two community gardens involving area residents with native plants and community building.

\$200,000 over three years

Valencia Community Action Network expands food reclamation work at area farms so more of the excess produce stays in the community to benefit local families.

\$25,000

Valencia Community Fund/Teen Center provides a complete commercial community kitchen to support entrepreneurs in the county, engage youth and teach individuals to prepare hot food from food boxes.

\$250,000 over three years

Valencia Community Fund partners with local food producers and suppliers to provide food vouchers for community members including ALICE (Asset Limited, Income Constrained, Employed) individuals who do not usually qualify for similar programs.

\$25,000



The Gift of Trust Preview

View a special preview of **The Gift of Trust**, a powerful documentary that showcases UWNCNM's innovative trust-based philanthropy project, Resilient Communities. This short screening highlights the journey of developing true partnerships with community agencies and the transformative impact of trust-based grant-making.



Scan this QR Code to view
The Gift of Trust video

What We Do:

Community Investments



UWNCNM's Community Investments priorities are informed by United Way Worldwide's Impact Areas and UWNCNM's Impact work. We believe in collective impact as an approach to improve outcomes for our communities.



UNITED WAY WORLDWIDE IMPACT AREAS

HEALTHY COMMUNITY

Improving health and well-being for all

YOUTH OPPORTUNITY

Helping young people realize their full potential

FINANCIAL SECURITY

Creating a stronger financial future for every generation

COMMUNITY RESILIENCY

Addressing urgent needs today for a better tomorrow

UWNCNM Local Impact Priorities

Community Safety – Improve community safety measures that support community access and wellness.

Equitable Health-Related Services – Increase equitable access to health-related services including physical, mental, and behavioral health.

Attendance and Graduation – Improve Pre-K through 12th grade school outcomes through programming that emphasizes attendance and/or graduation.

Career/College Readiness and Work-Based Learning – Increase college/career readiness through work-based learning experiences for high school, GED, and college students.

Continuing Education – Increase skill-building and degree/certificate attainment to enhance economic mobility and financial independence.

Housing Stability – Increase access to housing by providing case management or other supportive services that result in long-term housing stability for individuals and families.

***Basic Needs** – Hunger relief, emergency/short-term housing, healthcare, financial assistance, utility assistance, etc.

*one-year grants

What We Do:

Community Investments

TRUST-BASED PHILANTHROPY

United Way of North Central New Mexico is committed to trust-based philanthropy (TBP) which is grounded in building trust with our nonprofit grantees. This movement calls for mutual accountability between funders and nonprofits. It encourages philanthropic systems to reflect the needs and dreams of communities. We are working to change the power dynamics and structural barriers that too often get in the way of nonprofits achieving their intended impact. Ultimately, we believe our giving will be more impactful if we approach our relationships with grantee partners from a place of trust and collaboration rather than compliance and control. The values of TBP resonate with UWNCNM's values and that translates into the support our nonprofit grantees need for meaningful change.



Examples of how this looks in practice include:

Awarding grants as unrestricted, general operating dollars

Simplifying our grant application

Requiring Financial Standards Review (FSR) only for agencies selected for award

Grant review panels include both staff and individuals with direct and lived experience, as well as community members

Offering flexible ways to share outcomes, including verbal conversations

As we continue to grow in our TBP practices, we appreciate patience as we evolve and value the feedback of our partner agencies. For more information about TBP, please visit trustbasedphilanthropy.org.

What We Do:

Community Investment Grants

IMPACT GRANTS

Multi-year, unrestricted grants to agencies whose work aligns with United Way's Impact Priorities allows nonprofit recipients to concentrate on the work that is vital to their missions.

FY23 COHORT, YEAR 3 OF 3

Albuquerque Speech, Language, and Hearing	\$12,500
Best Buddies New Mexico	\$50,000
Career Guidance Institute.....	\$10,000
Casa Esperanza, Inc.....	\$35,000
Centro Savila.....	\$75,000
The Children's Hour	\$20,000
Cuidando los Niños.....	\$40,000
Enlace Comunitario.....	\$50,000
Girl Scouts of New Mexico Trails.....	\$67,750
Indian Pueblo Cultural Center, Inc.....	\$52,735
La Vida Felicidad, Inc.....	\$30,928
New Day, Inc.....	\$75,000
New Mexico Immigrant Law Center	\$39,500
New Mexico Legal Aid.....	\$60,264
NM Community AIDS Partnership.....	\$25,000
Oasis Albuquerque	\$40,000
Rape Crisis Center of Central New Mexico	\$109,910
Rebuilding Together Sandoval County	\$23,000
UNM Foundation Inc.- Comadre a Comadre.....	\$35,000
Wings for LIFE International.....	\$20,000
Women's Economic Self-Sufficiency Team Corp (WESST)	\$50,000

Total \$921,587

What We Do:

Community Investment Grants

FY24 COHORT, YEAR 2 OF 3

East Central Ministries.....	\$50,000
Ethos Literacy	\$32,500
Explora Science Center & Children's Museum of Albuquerque	\$32,500
Keshet Dance Company.....	\$50,000
New Mexico Health Equity Partnership.....	\$32,500
National Dance Institute of New Mexico.....	\$32,500
Paws & Stripes	\$50,000
PB&J Family Services	\$32,500
Pegasus Legal Services for Children.....	\$32,500
Presbyterian Ear Institute.....	\$32,500
United Voices for Newcomer Rights.....	\$32,500
Working Classroom	\$32,500

Total \$442,500

FY25 COHORT, YEAR 1 OF 3

ACCESS (Arts, Community, Culture, Education, Sports, and Science).....	\$50,000
Albuquerque Healthcare for the Homeless, Inc	\$50,000
Any Given Child Albuquerque	\$25,000
Dar a Luz Birth and Health Center.....	\$25,000
Healing Addiction in Our Community	\$25,000
Justice Code.....	\$25,000
New Mexico Dream Team	\$25,000
Rocky Mountain Youth Corps.....	\$50,000
Umoja Abq.....	\$12,500
Valencia Community Action Network.....	\$12,500

Total \$300,000

FY25 BASIC NEEDS GRANTS



These unrestricted one-year grants support short-term services to meet urgent needs (food, rental assistance, emergency shelter, medical/dental care) of families in north central New Mexico. This type of support is critical to build stability so children and families can thrive.

ABQ FaithWorks Collaborative.....	\$12,500
Assistance League of Albuquerque	\$ 7,500
Barrett Foundation, Inc.....	\$12,500
East Mountain Food Pantry.....	\$12,500
Family Promise of Albuquerque, Inc.	\$12,500
Feed New Mexico Kids, Inc.	\$12,500
Haven House	\$12,500
HopeWorks	\$25,000
Meals on Wheels New Mexico.....	\$25,000
New Mexico Asian Family Center.....	\$12,500
New Mexico Dental Association Foundation	\$15,000
Presbyterian Medical Services.....	\$12,500
Rio Grande Food Project.....	\$25,000
Roadrunner Food Bank, Inc.....	\$25,000
Rock at Noonday	\$12,500
Seed2Need	\$ 7,500

Total \$242,500

What We Do:

Community Investment Grants



FY25 CAPACITY BUILDING GRANTS

These grants allow nonprofit agencies to develop their capacity to achieve deeper impact for the people they serve. Funding supports projects such as staff development/professional training, data systems and community organizing.

Mothers Against Drunk Driving.....	\$25,000
New Mexico Immigrant Law Center.....	\$25,000
Valencia Shelter Services	\$25,000
Total \$75,000	



FY25 SANTA FE COUNTY GRANTS

These one-year unrestricted grants provide support for agencies whose work aligns with UWNCNM’s Impact and Basic Needs priorities and who provide the majority of their service in Santa Fe County.

Birthing Tree Fund.....	\$10,000
Breakthrough Santa Fe	\$10,000
Coming Home Connection.....	\$ 5,000
Girls Inc. of Santa Fe.....	\$10,000
Literacy Volunteers of Santa Fe.....	\$20,000
Reading Quest.....	\$10,000
Santa Fe Public Schools Adelante Program.....	\$20,000
Scott’s House	\$15,000
Sky Center/New Mexico Suicide Intervention Project Inc.....	\$15,000
Youthworks	\$10,000
Total \$125,000	



What We Do:

Community Investment Grants

FY25 DONOR GROUP GRANTS

UWNCNM's donor affinity groups offer the opportunity for people of all ages to network with each other and collectively have a bigger impact on growing philanthropy in north central New Mexico. Our donor groups committed to funding three-year Impact grants for agencies that align with their mission and values, in addition to other partnership and funding opportunities throughout the year.

In FY25, UWNCNM's donor groups granted more than \$345,000. For a breakdown of funding by donor group and for information about joining one of these groups, see pages 41 – 45 or **contact Stephanie Urban at 505-247-3671 ext. 459.**

FY23 OUTCOME EXCERPTS

UWNCNM collects feedback from grantees to document the impact of donor dollars in north central New Mexico. Data reported here are from the last completed year as this report went to press. FY24 outcome data is available in Fall 2025.

➤ Organizations funded: 81



33 Impact
grants totaling
\$1,364,087

➤ **Individuals impacted: 230,450**
21% our service area population

➤ **School Readiness – 10,245 individuals impacted**, including 465 students supported by 355 volunteers in elementary schools, whose reading scores increased by 10%-40% more than their peers, demonstrating significant academic improvement.

➤ **Community Safety – 17,767 individuals impacted**, including 241 judicial accompaniments for 128 rape survivors, **empowering survivors through the legal process and providing crucial support.**

• • FY23 OUTCOME EXCERPTS, CONT.

15,258,614
meals
served

894
individuals
housed

➤ Equitable Health-Related Services

6,967 individuals impacted, including **1,051** clients through in person and remote telehealth appointments; clients are primarily uninsured, non-English speaking adults: 80 percent of clients are ages 25 and older, 79 percent have no insurance and 75 percent speak a language other than English.

3,400
unhoused
individuals
receiving
healthcare

➤ Housing Stability – **529** individuals impacted, including vital home repairs on 21 homes for 38 residents, enabling veterans, senior citizens and individuals with disabilities to remain safely in their homes.

➤ 17 Basic Needs grants totaling **\$499,600**

➤ **60,770** individuals impacted, including **11,014** families who received a Grab and Go kit to experience hands-on learning at home, **134** foster children who were assigned a volunteer advocate to ensure they are safe, and free dental services for over 1,000 individuals including x-rays, exams, cleanings, fillings, extractions and dentures.

704,670
pounds
of food
distributed

➤ 19 Santa Fe County grants totaling **\$125,000**

DEI United

ADVANCING DIVERSITY, EQUITY AND INCLUSION



DEI United is a collaborative effort between United Way and the Albuquerque Community Foundation that creates immediate and lasting change by fostering a more equitable, just and sustainable environment in north central New Mexico. In the face of nationwide challenges and skepticism about diversity, equity and inclusion efforts, participation in DEI United signifies a commitment to advancing opportunities in our community by pushing for progress and standing firm in our dedication to creating a more inclusive future.

DEI United focuses its work on three pillars:

Community Engagement

Actively build relationships with the community through conversations that ensure that often unheard voices and aspirations are heard.

Support for Diverse Background-Led Organizations

Fund organizations deeply rooted in their communities, addressing racial and ethnic disparities in health and education. Create a grant-making program built on trust, offering accessible grants for organizations led by people with diverse backgrounds.

Equity in Leadership

Support nonprofit leaders who identify with diverse backgrounds or have lived experiences reflecting their communities. By responding directly to their needs, DEI United works to embed equity, longevity and wellness into the nonprofit ecosystem.

Looking ahead, DEI United will continue to partner with community leaders to provide support in ways that are meaningful to them in overcoming systemic barriers and embedding equity in their work. Now – more than ever – this work is necessary to realize a vibrant and thriving New Mexico.

DEI UNITED 2023 GRANTS

Agora Crisis Center.....	\$ 500
Community Wealth Building Cohort.....	\$15,000
Encuentro.....	\$15,000
Hispano Chamber of Commerce.....	\$14,000
La Plazita.....	\$50,000
National Institute of Flamenco.....	\$18,000
Native Health Initiative.....	\$20,000
New Mexico Foundation HEAL Fund.....	\$15,000
Together for Brothers.....	\$ 5,000

Total \$152,500

DEI UNITED EQUITY IN LEADERSHIP GRANTS



The grant period for the inaugural cohort of new and emerging leaders ended in February 2025. Each organization was awarded \$10,000 for their leadership to pursue career development goals and opportunities for collaborative learning, growth and connection. The Equity in Leadership cohort fostered a deep sense of belonging and empowerment among emerging and established leaders of color. The program provided a platform for leaders to develop their skills, challenge traditional leadership norms, and embrace their full selves in professional and community

spaces. Participants left with stronger networks, renewed confidence, and a commitment to paying forward their knowledge and experiences. The year was one of transformation, resilience, and collective impact, setting the foundation for continued collaboration and leadership in their communities.

Participation included leaders from Black Chamber of Commerce of New Mexico, Girl Scouts of New Mexico Trails, Juneteenth Renaissance Institute, Laguna Community Foundation, New Mexico Reentry Center, New Mexico Legal Aid, Rio Grande Community Development Corporation, Transgender Resource Center of New Mexico, The Rock at Noonday, Valencia Shelter Services and WESST.

DEI United Equity in Leadership Grants Sponsored by:

BANK OF AMERICA



ALICE in New Mexico



Essential, Working, Struggling

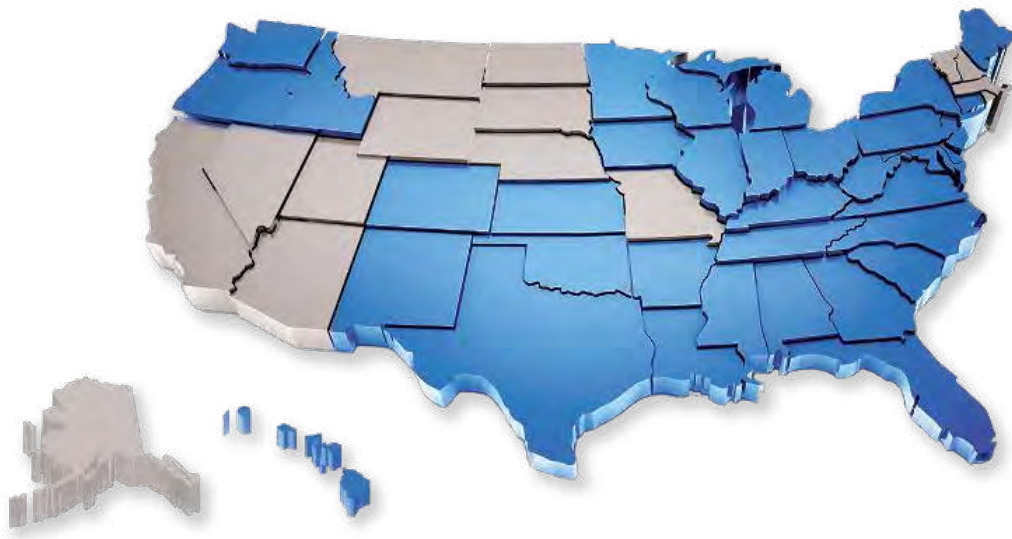
For a growing number of households, financial stability is nothing more than a pipe dream, no matter how hard they work. These households are ALICE – Asset Limited, Income Constrained, Employed – earning above the federal poverty level yet struggling to afford basic expenses.

ALICE households:

- Span all races, ages, ethnicities, and abilities, though households of color are disproportionately ALICE
- Include workers whose wages cannot keep up with the rising cost of goods and services
- Often include those who are working two or more jobs and still cannot pay their bills
- Include family members who need care and assistance, which makes it harder for their caregivers to find adequate work
- Live paycheck to paycheck and are forced to make impossible choices: pay the rent or buy food, receive medical care or pay for child care, pay utility bills or put gas in the car
- Are part of every community nationwide



United for ALICE is a movement representing United Ways, foundations, public officials at all levels of government, businesses large and small, and individuals who want to make a difference in our communities.



- Visit UnitedforALICE.org to see many examples of how United Ways, foundations, academic institutions, businesses, and other partners across sectors are turning data into action to make a difference for ALICE in their communities.

In New Mexico, local United Way organizations have partnered to shine the spotlight on what we can do, collectively and in our own communities, to help ALICE. A data report specific to New Mexico will be available in the fall of 2025. United Way of North Central New Mexico is a leading participant in the state’s ALICE effort.

The United for ALICE network of partners use the ALICE measures to highlight the challenges ALICE households face to inspire action and generate innovative solutions that promote financial stability. These programs, practices, and policies improve access to affordable housing, high quality child care and education, healthy food, health care, transportation, workforce training, and more.

Because the problems facing ALICE families are interconnected, effective solutions must be too. United For ALICE provides a framework, data, and tools that community stakeholders can use to inform policy and drive innovation. ALICE measures are designed to help lift all boats: Improving conditions for ALICE families will in turn fuel economic growth, benefiting all households, communities, and businesses across the state.



UWNCNM PUBLIC POLICY

United Way of North Central New Mexico engages in public policy advocacy to leverage the knowledge and experience of our community to help inform policymakers’ decisions for human services. As a leader in the nonprofit community, United Way seeks to craft practical long-term solutions for people and communities.

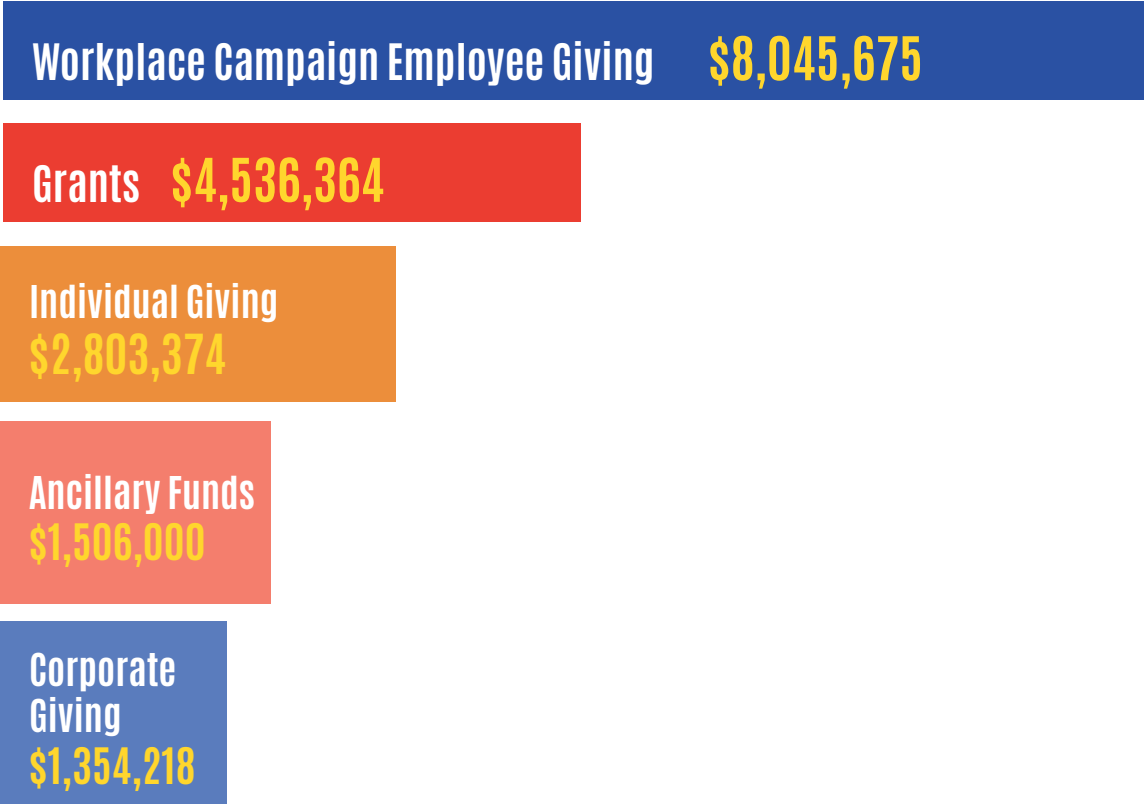
UWNCNM’s Public Policy Committee, made up of board members, community stakeholders, and our CEO, advocates for state legislation and appropriations that expand college/career Readiness activities throughout New Mexico. Through a nonpartisan, non-ideological approach to advocacy, the committee leverages our convening power to bring together allies – businesses, labor, nonprofits, and government – to advocate for the education, health, and financial stability of every person in every community.

Financial Year in Review



2024 CAMPAIGN RESULTS

Total Revenue Raised
\$18,245,631



Revenue raised in the 2024 campaign provides funds for UWNCNM's fiscal year of July 2025 through June 2026.

For our most recent financial audit (through June 30, 2024) and our 990 please visit uwncnm.org/financial-accountability

2025-2026 Budget EXPENDITURES

Designations to Other Organizations:

\$7,686,070

Administration, Fundraising & Operations:

\$4,203,279

Community Investment Grants:

(includes Community Impact, Basic Needs, Capacity Building, ALICE, and DEI United grants)

\$2,316,661

Future UWNCNM programming:

(through 2028, from multi-year grants)

\$2,160,000

Community Outreach and Partnerships:

(includes Resilient Communities and Rural County support that also covers Santa Fe)

\$1,754,206

Direct Services:

(includes 211 Helpline, the Family Advocacy Center and Tax Help New Mexico)

\$1,079,557

Rising Together:

\$942,814

Endowment/Restricted Planned Gifts:

\$259,723

Allowance for uncollectible funds:

\$253,066

ALICE Report

(Including initial start-up and staffing)

\$204,454

In the 2025-26 fiscal year, we raised \$18.25M in revenue and allocated \$2.61M from prior campaigns. Of this, \$12.92M supported UWNCNM programs, grants, the endowment, administration, and future initiatives. Another \$7.94M went to donor-designated gifts to other nonprofits and uncollectible funds. We remain deeply committed to sustaining our agency partners and driving lasting community impact.

Our Five Counties

BERNALILLO COUNTY

Growing up, Xochi came from a divorced family where her mom was in and out of prison and her dad had substance addictions. Her family would move every 6 months to a year, and so she and her siblings never really settled into a school.

In 8th grade, she started using drugs and alcohol. She ran away from home at age 12 and was homeless for a year with kids in similar situations. Sometimes, people would offer them food and shelter. At one point, she got stuck in an apartment for a month, when the man living there offered her and her friend a place to live if they stole alcohol. She was expected to obey and act like a wife in exchange for having shelter. It was better to have shelter than to be out in the elements. She didn't realize in that moment what was happening – she was doing what she had to do to survive. **She first connected with NM Dream Center at age 14. With their help, she was able to find housing and start classes. She has now completed her nursing license with honors.** She feels noticed and like she's where she's supposed to be. She says, "Become the person you never had." Watch her story here:



BY THE NUMBERS:

UWNCNM Grants
Awarded to
Bernalillo County:

55

People impacted by
UWNCNM Grants to
Bernalillo County:

546,000+

SANTA FE COUNTY

In Santa Fe, we deepened our relationships with grantees in ways that exemplify the principles of trust-based philanthropy.

Throughout the 2024 Community Impact cycle, we supported all 10 of our grantees through hands-on volunteer events, meaningful celebrations, collaborative problem-solving, and site visits. Our partners know that our commitment extends far beyond the check.

“Thank you again to you and United Way of North Central New Mexico for being more than just a funder – for being a true partner in this work.

It’s incredibly meaningful to know we’ve got your support, and we genuinely feel that from you and everyone at UWNCNM.”

Thank you again,
Michelle Vignery
Santa Fe Public Schools Adelante

United Way’s 2024 investment in Santa Fe County: **\$725,000**

SANTA FE PROGRAMS:

211 Connect, in partnership with the City of Santa Fe and Santa Fe County

Ride United, free transportation services

Tax Help NM, free tax preparations that bring in millions of dollars in returns

Resilient Communities, food systems at the heart of community and skill building

In 2024, we launched **Retire United**, a donor group to engage retired people in volunteerism, social connection, and philanthropy.



Financial Empowerment through One-on-One Coaching

This year, we will lay the groundwork for a new financial empowerment service in Santa Fe. Backed by national research, this proven model helps individuals build long-term financial security through personalized support in employment, budgeting, and financial planning. United Way is proud to be partnering with local organizations to bring this free, high-impact service to our community. Stay tuned for more details in 2025.

Our Five Counties

SANDOVAL COUNTY

BY THE NUMBERS:

UWNCNM Grants
Awarded to
Sandoval County:

26

.....
People impacted by
UWNCNM Grants to
Sandoval County:

70,500+

.....
Partner agencies making an
impact in Sandoval County
include:

Haven House

Healing Addiction in Our
Community

Paws and Stripes

Rebuilding Together Sandoval
County

Seed2Need

An elderly homeowner lives alone in her mobile home; she didn't have running water, and was not connected to the town water supply. She couldn't afford a water utility bill, and the shallow well on her property had a faulty pump and motor and no filter. **Rebuilding Together Sandoval repaired the motor, installed a filter, and re-piped the entire home since water lines had too much sediment to be serviceable.** This client now has clean, running water in her home.



TORRANCE COUNTY

BY THE NUMBERS:

UWNCNM Grants
Awarded to
Torrance County:

18

People impacted by
UWNCNM Grants to
Torrance County:

11,400+

Partner agencies making an impact in Torrance County include:

East Mountain Food Pantry | Healing Addiction in Our Community
Mothers Against Drunk Driving | Presbyterian Medical Services

“ The EMFP has impacted my life in a huge way. I come across times after paying rent and all utilities including phone, etc. where there is absolutely no money left to eat!!! I thank the Lord and thank the food pantry for all you have done for my family & me. ”

VALENCIA COUNTY

BY THE NUMBERS:

UWNCNM Grants
Awarded to
Valencia County:

19

People impacted by
UWNCNM Grants to
Valencia County:

17,000+

Partner agencies making an impact in
Valencia County include:

Healing Addiction in Our Community
La Vida Felicidad, Inc.
Rocky Mountain Youth Corps
Valencia Community Action Network
Valencia Shelter Services

A grandmother learned about our libraries through another one of our services. At first she went up to the library and wasn't sure what it was. She realized it was kits filled with books and resources, and so she started going once a month with her 5 year old and 3 year old grandchildren. She says it's amazing because her grandchildren will remind her to go back and get a book each month, so they can read and do the activities together.

Mosaic Celebration

The inaugural Mosaic Celebration, themed “**The Spirit of Community, 90 Years Strong,**” took place on April 17, 2025, at the National Hispanic Cultural Center. This vibrant event marked the culmination of our 90th Anniversary celebrations and aimed to recognize the donors and partners who have significantly contributed to the impact of United Way of North Central New Mexico.



Event Highlights

The Mosaic Celebration welcomed over 350 guests and featured a variety of engaging activities designed to highlight the diverse cultures within our community:

- Local food and dessert stations along with specialty drinks from local breweries
- Mosaic art piece – representing our joint effort in working together with the community
- New Mexico Experience raffle baskets
- Local and culturally relevant New Mexico entertainment



Keynote Speaker:

**United Way Worldwide President & CEO,
Angela F. Williams**

We were thrilled to have Angela F. Williams, President and CEO of United Way Worldwide, as our keynote speaker. Her leadership and vision have been instrumental in driving meaningful change and strengthening communities globally. Her presence underscored the significance of our collective efforts and the power of community.

UNITED IS THE WAY

We invite you to be a part of this journey. By joining us, you become a part of a movement that is dedicated to creating equitable communities and ensuring that every individual and family has the support they need to thrive. **See you at 2026 Mosaic Celebration!**



Day of Caring & Volunteering Opportunities



Day of Caring 2025

In 2024, our Week of Caring – a dedicated week for rallying volunteer support for the nonprofit agencies we collaborate with – witnessed the participation of 130 volunteers across the five counties we serve, engaged in 14 service projects.

This year, we are proud to relaunch Day of Caring as a single-day, community-centered event. After two years of Week of Caring, this year's format returns to a focused, public-facing activation designed to engage volunteers, partners, and the broader community in meaningful service. The event will showcase United Way's year-round programs and offer opportunities for hands-on service, storytelling, and community empowerment.

Save the Date

Join us for **Day of Caring on Saturday, October 11, 2025**, for a day of service, connection, and community impact! United is the Way!

Learn more or sign up to receive updates by visiting uwncnm.org/dayofcaring.

Donor Groups

Guys Give, Hispano Philanthropic Society, Retire United, Women United and Young Leaders Society

Within UWNCNM donor groups, donors from diverse backgrounds come together over their shared passion to make north central New Mexico a place where all individuals and families can thrive! Donor group members take an active role in strengthening our community and through the gift of their time, talent, and giving, they help create change from the ground up.

Through UWNCNM donor groups, members:

- Network with other like-minded philanthropic community members
- Engage more deeply with the work of UWNCNM
- Learn from, and be inspired by, local community leaders
- Volunteer with other donors at agencies supported by UWNCNM grants
- Help raise funds that amplify UWNCNM's impact in our five county region
- Contact stephanie.urban@uwncnm.org to learn how you can get involved!

RETIRE UNITED

UWNCNM's newest donor group, Retire United, launched in 2023. Both chapters in Santa Fe and Albuquerque share a common purpose to build a network of retired (or nearly retired) donors, who through volunteering and philanthropy, help families in our community to have a stronger, brighter future.

In 2024, the Albuquerque Retire United community continued to grow through monthly coffee meetups featuring special guests from Meals on Wheels, Saranam, the Grief Center, UNMH Child Life department, CNM's NM New Elder World program, and UWNCNM's Community Investments team. They also got to work volunteering – volunteers prepared meals at Ronald McDonald House, sorted clothing at Locker 505, set up monthly book sales for the Public Library, planted spring crops at La Plazita Institute's local farm, and distributed food at Storehouse.

In Santa Fe, Retire United members meet monthly for socializing and connecting. Members volunteered for United Way's Week of Caring, attended site visits with grantee partners, and participated in the grant application review process. We're excited to build United Way's presence in Santa Fe with this opportunity to connect and give back.

Retire United is all about connecting, learning, and serving!



HISPANO PHILANTHROPIC SOCIETY

The Hispano Philanthropic Society (HPS) at United Way of North Central New Mexico stands as a powerful force for cultural pride, community investment, and transformational leadership. With over \$356,000 invested in the past five years alone, HPS has driven meaningful change by uplifting Hispanic communities through education, mentorship, service, and advocacy.

HPS champions the next generation by facilitating access to mentorship, and creating platforms where Hispanic voices, stories, and leadership are centered and celebrated. Through initiatives like the Leadership Speaker Series and Hispanic Heritage Month spotlights, HPS amplifies the influence of Hispanic leaders who are shaping the future of New Mexico.

From honoring community changemakers to investing in students and families, the Hispano Philanthropic Society continues to ignite lasting impact. Its legacy is not only measured in dollars but in lives touched, opportunities created, and the bold vision of a stronger, more united New Mexico led by its Hispanic leaders.

IN 2024, HPS FUNDED:

\$43,300 grant to Jobs for America's Graduates NM

\$15,000 grant to NewMexicoKidsCAN



Donor Groups

WOMEN UNITED

As a community of motivated women, Women United (WU) works to build meaningful and lasting change by empowering women to improve their lives.

WU is committed to building opportunities for women to connect, learn, give, and serve!

Since 2002, Women United raised over \$2.5 million that invested directly into our community to fort agencies and initiatives that support the well being and success of women.

This year, WU is completing the third year of their first cohort of 3-year grants to:

Catholic Charities (\$20,000)

Crossroads for Women (\$25,000)

Saranam (\$75,000)

Susan's Legacy (\$10,000)

TenderLove Community Center (\$45,000)

Extra gifts were made to:

Girls on the Run, Rio Grande: \$1,000

Junior Achievement of New Mexico: \$1,000

NM Historic Women's Marker program: \$1,000 to support their curriculum teaching students about the impact of historic women in New Mexico

Sun Country Golf Foundation: \$2,250 to support their work of bringing golf to communities traditionally left out of the sport

Susan's Legacy: \$500 for holiday gift cards for clients

Tenderlove: \$2,000 to fund new computers for transitional living facility

WESST: \$1,000

The Women United Community

The WU community gathered for meaningful discussions at "Drinks and Dialogue Happy Hours" where topics ranged from women in sports, to health research and AI and new connections made. At regular morning coffee meetups, WU members got to know one another and learn about inspiring work in our community. At three golf clinics held in partnership with Sun Country Golf Foundation, women learned new skills and built new friendships.



Volunteering

Women United took on the challenge of furnishing and decorating an apartment at Saranam for a new family moving in as their first step on the journey out of homelessness. Members also volunteered with TenderLove Community Center to assemble desks for a computer lab, for which WU also donated funds to purchase computers.

YOUNG LEADERS SOCIETY

Founded in 2003, YLS is a community of young professionals committed to growing in their various careers as well as serving north central New Mexico through volunteerism, advocacy, and philanthropy.

YLS members gathered for networking happy hours and volunteering opportunities where friendships were made and community partners were celebrated and supported! From making tacos at Ronald McDonald House, to collecting kids' clothing for Locker 505 at a 'Throwback Thursday Happy Hour,' YLS is always looking for creative new ways to connect, serve, and learn.

In 2024, YLS welcomed 5 new council members to the team to help guide YLS into an exciting new chapter with new opportunities for mentoring, volunteering, and learning.



2024 YLS GRANT RECIPIENT:

**Native American
Community Academy:**
\$32,100

GUYS GIVE

Through volunteerism and discussion, Guys Give focuses on learning about and changing outcomes for those who are building a better life for themselves and their children, with a funding focus on agencies that serve survivors of domestic violence. What started ten years ago as a small group of guys wanting to do good work and drink good beer has turned into a thriving and diverse community of good-hearted members who care deeply about helping families in New Mexico.

All are welcome at monthly brewery meetups and regular volunteer projects.

In 2025, Guys Give celebrates 10 years of community building and impact!

Since its founding in 2015, Guys Give raised over \$600,000 to support our community through grants and volunteer projects. Not only are Guys Give donors generous, but they're willing to roll up their sleeves and get to work, completing over 13 large volunteer projects for agencies serving survivors of domestic violence – from constructing pergolas, fences, and food pantries, to installing playgrounds and fences!



IN 2024, GUYS GIVE FUNDED:

\$50,000 grant to Casa Fortaleza
\$10,000 gift to the newly established
endowment for the Family Advocacy Center
\$7,000 grant to the Domestic Violence
Resource Center to launch a financial
literacy program with Prosperity Works

Rising to Meet the Future

Endowment Campaign

The **Rising to Meet the Future Endowment Campaign** was launched with a transformative \$1 million investment from MacKenzie Scott.

By growing the UWNCNM Endowment, we're building on that extraordinary gift to create long-term protection – not just for United Way of North Central New Mexico, but for the families and communities across our five-county region. This initiative was born from the lessons of the COVID-19 crisis, with a focus on resilience and readiness for whatever comes next.

Every contribution to the endowment helps establish a stable, sustainable source of income that fuels UWNCNM's work for years to come. It gives us the flexibility to plan for the long term, invest in multi-year strategies, and address deep-rooted challenges in areas like education and family stability with lasting impact.

Thanks to the momentum sparked by MacKenzie Scott's generosity, the funds raised through this campaign will help us accelerate progress for families and children – now and well into the future.

To learn more, please contact Melissa Dracup, Major Gifts Director, at (505) 245-1754 or melissa.dracup@uwncnm.org.



Thank you to the following donors for making a gift to this campaign:

\$1,000,000+

Jim Asperger

Howard and Debra Friedman

MacKenzie Scott

George and Jenean Stanfield

• • • • Thank you to the following donors for making a gift to this campaign:

\$500,000+

Revathi A-Davidson and Russ Davidson
Art Gardenswartz and Sonya Priestly
John and Kristine Stichman

\$250,000+

John Carey and Julia Bowdich	James and Ann Peery
Paul and Connie Cassidy	Ed Rivera and Lisa Webster
Rachel, Billy and London Gupton	Pamela Sullivan
Jim and Kristen Hinton	Franklin Wilson
Jim and Ellen King	One donor wishes to remain anonymous

\$100,000+

The Corio Foundation
Frank Fine and Leslee Richards
Valerie Ingram

\$50,000+

Helen Grevey

\$25,000+

Kyle and Cherrie Beasley	Yashoda Naidoo and David Montgomery
David and Susan Buchanan	Gabriel and Anna Sanchez
Carol Mayo Cochran and John Cochran	Lori Waldon-DeAdwyler and Ted DeAdwyler
Linda and Brent Cooper	

\$10,000+

Michelle King
New Mexico Mutual

2024–25 Corporate Cornerstone Companies

We extend our heartfelt thanks to our Corporate Cornerstone partners, whose extraordinary generosity helps underwrite over one-third of our administrative costs—ensuring that more donor dollars go directly to the community.

VISTA LEVEL (\$200,000+)

 **PRESBYTERIAN**
Health Plan, Inc.

PIÑON (\$100,000 - \$199,999)


BlueCross BlueShield
of New Mexico


Lovelace
Health System

 **New Mexico**
GAS COMPANY®


PNM

 **Sandia**
National
Laboratories

MESA (\$50,000 - \$99,999)


Albertsons


BANK OF
ALBUQUERQUE
Powered by BOA Financial


FSL
Foundation for
Sustainable Living

VALLEY (\$25,000 - \$49,999)

Bank of America
Klinger Constructors, LLC
New Mexico Mutual
U.S. Eagle Federal Credit Union
Wells Fargo

BOSQUE (\$10,000 - \$24,999)

Albuquerque Journal
Alvarado/Sandia Peak Tram
BNSF
Brycon Construction
Chalmers Ford
Enterprise Mobility Foundation
FRENCH Funerals-Cremations
General Mills Foundation
JB Henderson Construction

Kirtland Federal Credit Union
KOAT-TV
Morgan Stanley
Pulakos CPAs, PC
Sunward
TriCore Reference Laboratories
US Bank
WaFd Bank

RIO GRANDE (\$7,500 - \$9,999)

SUMCO Phoenix Corporation

CHAPARRAL (\$5,000 - \$7,499)

Bernalillo County
Carl C. Anderson Sr. &
Marie Jo Anderson Charitable
Foundation
Century Sign Builders
Comcast

Costco Stores
Dekker
Ethicon
Gridworks
Holmans USA Corporation

Intel Corporation
Meta Los Lunas Data Center
Miller Stratvert P.A.
ONEOK, Inc.
Westwind Computer Products, Inc

PARTNERS (\$500 - \$4,999)

AON Risk Services, Inc.
AT&T
Atrisco Heritage
Foundation
BMO
Bohannon Huston, Inc.
Century Bank
Champion Xpress Carwash

Cheetah Strategy
Del Norte Credit Union
LOV Foundation
Eli Lilly & Company
EMC Insurance
EPCOR Water
ERA NM Cares
Glass Rite

Google
HB Construction
The Hartman + Majewski
Design Group
HealthFitness
Intuitive
IronEdge Group
Jaynes Corporation

Kendra Scott
KPMG, LLP
Main Bank
MONTECH, INC.
Texas Instruments
Valero Energy Corporation
Wawanesa

Impact Investors

Impact Investors generously donate \$2,500 and more annually to directly support the work of United Way of North Central New Mexico, and for that we extend special recognition and appreciation.

This year **285 GENEROUS DONORS** gave over **\$1.82 MILLION** allowing UWNCNM to respond to our community's needs by increasing opportunities for educational attainment and by **CONNECTING FAMILIES** with the resources and services they need.

\$100,000 – \$249,999 ANNUAL GIFT

The following donor wishes to be listed by name only:

The Corio Foundation

\$50,000 – \$99,999 ANNUAL GIFT



Art Gardenswartz and
Sonya Priestly



Jim and Ellen King



John H. and Kristine Stichman



Franklin E. Wilson

\$25,000 – \$49,999 ANNUAL GIFT



Rosalyn R. Hurley



John A. Carey and Julia B. Bowdich



Rondi and Duane Thornton



Patricia Vincent-Collawn

The following donors wish to be listed by name only:

Barbara and Dan Balik | Mark Hedemann | Jim and Kristin Hinton | Jessica and Matthew Reno

\$20,000 – \$24,999 ANNUAL GIFT



David and Mae Claire Branton



Frank Fine and Leslee Richards

The following donor wishes to be listed by name only:

John W. Kane

\$15,000 – \$19,999 ANNUAL GIFT



Louis and Stacy Abruzzo



Susan P. Denniston

The following donors wish to be listed by name only:

Lisa Eden | Pamela J. Sullivan | James R. Voet

One donor wishes to remain anonymous

\$10,000 – \$14,999 ANNUAL GIFT



Paul and Connie Cassidy



Bill and Karla Gates



Henry M. Dodd and
Kathie L. Hiebert-Dodd



Lori Waldon DeAdwyler
and Ted DeAdwyler



Jen Gaudioso and
Damian Donckels



Diana and Chester
French Stewart



Sandy Gold



Dr. Tobe Phelps and Leanne
Kimbrough



Rodney and
Melanie Prunty



Raquel and David Reedy

continued on following page....

Impact Investors

\$10,000 – \$14,999 ANNUAL GIFT

continued from previous page....



James and Jeanette
Schwarz



Maripat Silva



Joan Tafoya and
Brian Kosko



Sam and Janice Torrez



Len and Liz Trainor



Ed Rivera and Lisa
Webster



David and Susan
Weymouth

The following donors wish to be listed by name only:

Laura and Eric Biedermann | Charles T. and Kimberly S. Breinholt | Dr. Kathy Finch | Scott and Jennifer Lindblom | John and Sheila Merson
James and Ann Peery | Larry E. Predika | Nelson Reinsch, Jr. | P. Elena Sanchez Recovable Trust | Richard D. Van Dongen | Leanne Weart

Nine donors wish to remain anonymous

\$5,000 – \$9,999 ANNUAL GIFT



Adelmo (Del) and
Rebecca Archuleta



Jim Asperger



Janice Bandrofchak and
Cleve Sharp



Racquel Barnes



Kyle and Cherrie Beasley



John and Carol Cochran



Linda Cooper



John C. Crawford and
Carolyn Quinn



Chris and Eva Dunkeson



Dr. Daniel Friedman

continued on following page....

\$5,000 – \$9,999 ANNUAL GIFT

continued from previous page....



Rachel, Billy, and
London Gupton



Marianne and Dennis Hill



Clifford Ho and
Sylvia Saltzstein



Todd, Lisa and
Preston Kruger



Sheila Mendez and
Matthew Krueger



Chris and Kellie Mixon



Bob and Betsy Murphy



Cara Gordon Potter and
Ed Rosenblum



Gabriel, Anna and
Gabby Sánchez



Grant and Melissa Soehnel



Garnett S. Stokes and
Jeffrey N. Younggren



Craig and Lynn Trojahn

The following donors wish to be listed by name only:

Brian and Susan Adams | Gerald P. Alldredge | Revathi A-Davidson and Dr. Russ T. Davidson | Kirk and Debra Benton | Tyler Berg
Robert Bovinette | Ryan and Jessica Burt | Ben and Jacquie Cook | Kim M. Denton-Hill and Roger R. Hill | Robin and Kevin Divine
James and Kathy Gingrich | Helen A. Grevey | Stan and Sara Griffith | James Groening | Roger and Donna Hagengruber
Michael J. and Sheila Hannah | Mark and Linda Henderson | Margaret Keller | Cynthia King Schultz | Marshall Stewart Klee
Scott and Emily Kowalchuk | Kevin Leung | Keith Matzen and Terri McCarty | Richard C. Minzner and Sabreann Baca Minzner
Ronald and Mary Moya | Carlos Ramon Ozuna | The Peterhans | Dustin Romero | Christopher and Catherine Siefert
Luisa Maria Smallwood | Tom and Cheri Solomon | Andrew and Kathleen Strebe | Harold and Andrea Sunderman | Sylvia Taborelli
Todd and Kayci Trevino | Arthur and Suzanne Verardo | Michelle and Bill Vering | Lesa and Steve Vigil | Drs. James and Joan Woodard

Eight donors wish to remain anonymous

Impact Investors

\$2,500 – \$4,999 ANNUAL GIFT



Jeanette and Tom Brahl



Jeffrey and Kelly Brooks



Dr. Aaron Brundage and
Christy Gregory Brundage



Vaadra and Michael Chavez



Lance and Kathy Chilton



Dr. and Mrs.
Paul T. Cochran



Bill and Michelle Coons



Jerry and Jannie Dusseau



Kevin and Jenice Eades



Cole and Kelcy Flanagan



Fran and Bob Fosnaugh



Sean and Beverlie Frazier



Pamela Gallegos and
Damian Segura



Dr. Ryan & Lisa Goodman



Janice Honeycutt Hering
and James S. Hering, Jr.



Bruce and Mary
Keleher Castle



BJ Jones and
Orlando Lucero



Tom and Andrea Jones



Barbara and
Gerald Landgraf



Sherman and
Cathy McCorkle



Stanley Mount and
Roxanna Meyers



James E. Miller



Joseph Mulkern



John Quinn Pate



Dr. Chris and Renee Patton

continued on following page....

\$2,500 – \$4,999 ANNUAL GIFT

continued from previous page....



Jac and Susanna Pier



Justin and
Tamara Rodriguez



Peggy Sanchez Mills and
James E. Mills



Krista Smith



Jim and LeeAnne Smith



John and Joanna
Valentine



J. Pace and Nancy
VanDevender



Brad Yablonsky

The following donors wish to be listed by name only:

Brendan Adams | Linda and Carl Alongi | Rick and Joanne Alvidrez | D'Ann Anderson | Tommy Ao | Kevin and Marlene Baca | Derek Balke
 Jeanne Banks and John Dickens | Michael and Elizabeth Bawden | James Bean | Taylor Berger | Joseph Bishop | Alan and Lisa Boyd
 Samuel Bradshaw | Tom Bullard | Patrick Burton | Bruce and Mary Keleher Castle | Joseph and Rachael Castro, Jr. | Christine T. Cooper
 Billy Corliss Craig and Carol Crowder | Ivan Deutsch | Michael Devin | Beth M. Dick and D. Patrick Dick | Victor E.E. Echeverria
 Ron and Peggy Eppes | Kathryn M. Francis | Deborah Frincke | Robin and Jack Gauthier | Sayre T. Gerhart | David Gibson
 Dr. Donald J. Gillich | Albert D. Giralmo | Arne Gullerud | Lorenzo P. Gutierrez | Leo O. Harris and Ann Simms | Helen Hecht
 Bret J. Henderson | Heidi Herrera | Christopher J. Hogg | Greg and Amy Homicz | Olivia Christine Hon | Dr. David Hsi
 James G. Hughes | Lawrence B. Ingram Family Fund | Jeffrey Andrew Ivie | Lorenzo Jasso | Justine Johannes
 Monica Jojola | Steven and Kathleen Kaestner | Michael and Stacy Kaneshige | Angie Kelic | Patrick and Debbie Kinsella | John Klem
 Robert Knepper | Karen and Chet Leach | Matthew Lopez | Alia Lubers | Kevin Maben, MD | Steven and Yvonne Maestas
 Rebecca A. March | Kraig Max | Drs. Rohini and Jason McKee | Charles Merz | John and Nadine Miner | Julie and Henry Monroy
 Clay Moraga | Lee Moraga | Madeline W. Nasby | Charles and Ruth Needham | Christopher Thomas Nesbit | Mandy Nevins
 Patricia Oshel | Donald L. Overmyer | Anup Parikh | Gary A. Petersen, Jr. | Edward Piekos Lee Joshua Rashkin | Davinia and Jason Rizzo
 Barry L. Roberts | Barbara Rodriguez | Richard and Pamela Salmon | Dianna D. Sammons | Peter Sanchez | Kelly and Mariposa Sivage
 Matthew Dean Schwartz | Ron and Mary Ellen Shettlesworth | Maureen and Tony Sill | Jim and LeeAnne Steven B. Spahr | Michael J. Starr
 Ernie Steele and Jamie Silva-Steele | Emily and Joshua Stein | Aaron Strasburg | Ian Sturdevant | Don and Jenny Tarry
 Weldon and Rebecca Teague | Leonid Tsakh | Jennifer Turrietta | Vincent Urias and Angela Rivas | J. Dayton and Sara Voorhees
 Kimberly and Benjamin Welch | Gregor and Becca Wells | Daniel Edward Wesolowski | Julie A. Wilder, PhD | Hank and Mary Witek
 Walter E. and Shelley Cohen Fund | 29 donors wish to remain anonymous



UNITED WAY
North Central New Mexico

Tocqueville
SOCIETY

In the past year alone, the UWNCNM's Tocqueville Society collectively invested over **\$5.2 MILLION**, constituting more than **28 PERCENT** of United Way's annual campaign. Notably, **\$1.3 MILLION** of this sum directly supported the endeavors of UWNCNM, laying a **ROBUST GROUNDWORK** for the well-being of families and children.

Since 1996, members of the **United Way of North Central New Mexico Tocqueville Society** have spearheaded efforts to enhance the lives of countless individuals and families through remarkable financial contributions, volunteer work, and advocacy. For many, membership is not merely about monetary donations but rather an opportunity to actively engage in addressing the challenges facing families and communities, striving for a brighter tomorrow.

Joining a national network of over 20,000 philanthropic leaders, the Tocqueville Society members of UWNCNM are dedicated to fostering opportunities for everyone in our region. **Locally, our 261 members have generously contributed an average of \$19,070 each.**



MILLION DOLLAR ROUNDTABLE



John A. Carey and
Julia B. Bowdich



Howard and Debra Friedman



Art Gardenswartz and
Sonya Priestly

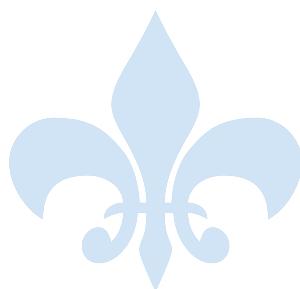


Mary Jury and Victor R. Jury, Jr.



Diana and Chester French Stewart

\$100,000 – \$249,999 ANNUALLY



The following donor wishes
to be listed by name only:
The Corio Foundation

\$75,000 – \$99,999 ANNUALLY



Rosalyn R. Hurley



Franklin E. Wilson

\$50,000 – \$74,000 ANNUALLY



Jim and Ellen King



Todd, Lisa and Preston Kruger



Stuart and Janice Paster



Bruce and Sandy Seligman



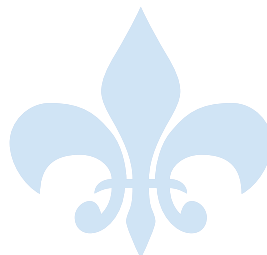
John H. and Kristine Stichman



Len and Liz Trainor

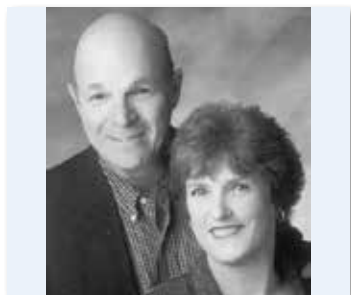
The following donors wish to be listed by name only:

Helen A. Grevey
Leo O. Harris
Eric and Kim Herrera



Richard C. Minzner and
Sabreann Baca Minzner
Andrew and Kathleen Strebe
Three donors wish to remain
anonymous

\$25,000 – \$49,999 ANNUALLY



Nancy and Cliff Blaugrund



Louise Campbell-Tolber and
Steven G. Tolber



Dr. and Mrs. Joshua T. Carothers



John and Carol Cochran



Chris and Eva Dunkeson



Frank Fine and Leslee Richards



Rachel, Billy, and London Gupton



Janice Honeycutt Hering and
James S. Hering, Jr.



Sherman and Cathy McCorkle



Tim and Tracey Meisenheimer



Stanley Mount and
Roxanna Meyers



John and Cindy Perner



Cara Gordon Potter and
Ed Rosenblum



Ed Rivera and Lisa Webster



Ron and Meryl Segel



Rondi and Duane Thornton

continued on following page....

continued from previous page....



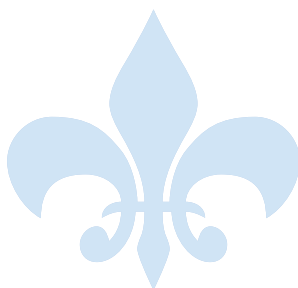
Patricia Vincent-Collawn



Brandon Writtenberry and Camila
Gutierrez Writtenberry

The following donors wish to be listed by name only:

Rick and Joanne Alvidrez
Barbara and Dan Balik
Laura and Eric Biedermann
Nick and Lynna T. Blea
Kathleen and Ed Cole
Lisa Eden
Harris L Hartz
Mark Hedemann
Mark and Linda Henderson



Duane and Andrea Kinsley
John and Sheila Merson
Julie and Henry Monroy
Josh Parsons and
Lindsey Blessing-Parsons
Jessica and Matthew Reno
Drs. James and Joan Woodard
Three donors wishes to remain
anonymous

\$20,000 – \$24,999 ANNUALLY



**David and
Mae Claire Branton**



**John C. Crawford and
Carolyn Quinn**



Tom and Vicki Crow



Susan P. Denniston



**Henry M. Dodd and
Kathie L. Hiebert-Dodd**



**Dr. Tobe Phelps and
Leanne Kimbrough**



**Rosanna Lucero-Torrez and
Michael L. Torrez**



**Jason and Gurprasad
Mitchell**



Robin and Tony Ohlhausen



**George and Jenean
Stanfield**



Craig and Lynn Trojahn



**Dianne Chalmers Wiley
and William Wiley**

The following donors wish to be listed by name only:

**Lorenzo P. Gutierrez
John W. Kane
David and Jill Patterson
The Peterhans
Robin and Nicole Strauser**



**Don and Jenny Tarry
Weldon and Rebecca Teague
John and Brenda Zepper
Three donors wishes to remain anonymous**



Louis and Stacy Abruzzo



**Adelmo (Del) and
Rebecca Archuleta**



Jim Asperger



**Kyle and Cherrie
Beasley**



**Jeffrey and Kelly
Brooks**



**Bruce and Mary Keleher
Castle**



**Dr. and Mrs.
Paul T. Cochran**



**Jerry and Jannie
Dusseau**



**Msgt. Kevin Haley and
Dr. Denise A. Gonzales**



Art and Dodie Hawkins



Tom and Andrea Jones



David and Melissa King



Bob and Betsy Murphy



John Quinn Pate



**Dr. Chris and Renee
Patton**



Jac and Susanna Pier



**Dr. Robert Rosenberg
and Jane B. Wishner**



**Sylvia Saltzstein and
Clifford Ho**



**Gabriel, Anna and
Gabby Sanchez**



**Michael Suttle and
Paula Sears**

continued on following page....

\$15,000 – \$19,999 ANNUALLY



continued from previous page....



Sam and Janice Torrez



**J. Pace and Nancy
VanDevender**



**Lori Waldon DeAdwler
and Ted DeAdwler**



Larry and Renee Waters



**David and Susan
Weymouth**



**Robert M. (Mike) White
and Donna Alesch White**



**Patrick W. and Karen S.
Wright**

The following donors wish to be listed by name only:

Teresa Clark

Bridgette M. Garcia

Christopher and Kristen Gorbach

Stan and Sara Griffith

Amanda and Chester Hawkins

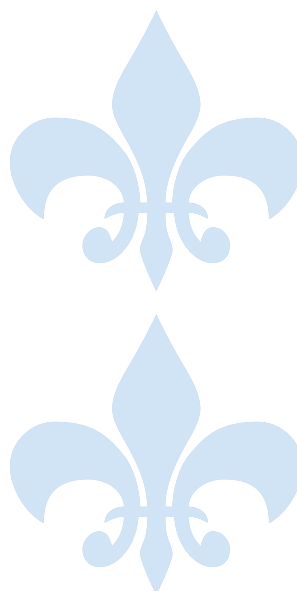
La Tonya N. and Chris Jenkins

Joseph Maestas

Ranne B. Miller and Margo J. McCormick

Charles and Ruth Needham

Jerome and Julie Norris



Lee Patchell

Angela Pedroza

Tommy and Linda Sanders

Christopher and Catherine Siefert

Chris and Linda Spencer

David and Leigh Anna Steele

April Suknot

Pamela J. Sullivan

James R. Voet

Six donors wish to remain anonymous



**Kenneth G. and
Cris F. Abbott**



Tom and Keri Antram



**Adelmo (Del) and
Rebecca Archuleta**



**Janice Bandrofchak
and Cleve Sharp**



**Dr. Aaron Brundage and
Christy Gregory Brundage**



Paul and Connie Cassidy



**Gabriel Castro and
Vicente Cano**



Bill and Karla Cates



**Vaadra and Michael
Chavez**



Lance and Kathy Chilton



Bill and Michelle Coons



Jamie and Jeremy Cox



**David A. Crawford and
Sarah K. McIntyre**



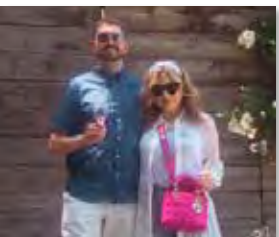
**Tushar P. Dandade, MD
and Becky Dandade**



**Jen Gaudio and Damian
Donckels**



Del Esparza



Cole and Kelcy Flanagan



**David H. Foster and
Holly Barnet-Sanchez**



Dr. Daniel Friedman



**Dion E. Gallant and
Kara Peterson**



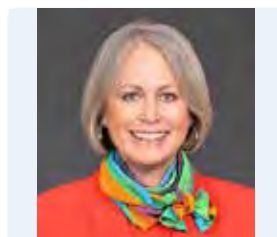
Sandy Gold



**Dr. Ryan and
Lisa Goodman**



**Robert H. Gorham II and
Barbara W. Gorham**



Carol Graebner



Drs. David and Kathy Hsi

continued on following page....

\$10,000 – \$14,999 ANNUALLY

continued from previous page....



Manfred and Jill Klar



**Barbara and Gerald
Landgraf**



**Dr. Andrew and
Mrs. Kathleen Metzger**



Chris and Kellie Mixon



Soyal Momin



**Ted and Margaret
Jorgensen**



Shirley E. Morrison



**Joshua and Julie
Orfield**



**Pavlos and Nicolette
Panagopoulos**



Todd and Jane Pilger



**Rodney and Melanie
Prunty**



**Dr. Barry Ramo and
Roberta Cooper Ramo**



Raquel and David Reedy



**Justin and Tamara
Rodriguez**



John P. and Terri Salazar



**Richard and Pamela
Salmon**



**Peggy Sanchez Mills
and James E. Mills**



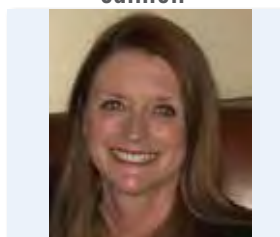
**James and Jeanette
Schwarz**



Darren Shafer



Maripat Silva



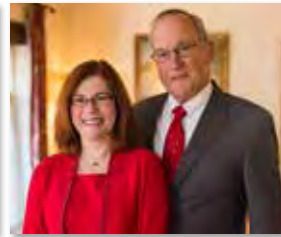
E. Anita Smith



Jim and LeeAnne Smith



**Bob and Barbara
Stewart**



**Garnett S. Stokes and
Jeffrey N. Younggren**



**Joan Tafoya and
Brian Kosko**

continued on following page....

continued from previous page....



**Scott and Susan
Throckmorton**



**Tony Trujillo and
Ann Saiz-Trujillo**



**Barbara and Duane
Trythall**



Angela Ward



Hugh Wishart

The following donors wish to be listed by name only:

Revathi A-Davidson and Dr. Russ T. Davidson

Gerald P. Alldredge

Carl and Linda Alongi

The Baca Family, Bueno Foods

Howard and Kathleen Becker

Kirk and Debra Benton

Arlen and Elizabeth Biersgreen

Breda Bova

Robert Bovinette

Charles T. and Kimberly S. Breinholt

Tom and Stephanie Briones

Angelo Brunacini and Lisa Giannini Brunacini

Ryan and Jessica Burt

Brad and Erica Cook

Loretta Cordova de Ortega, MD and Roberto Ortega

Sam and Vicki Dazzo

Robin and Kevin Divine

Dr. Kathy Finch

Carol Follingstad

Maureen Gannon

John and Dana Grisham

James Groening

Tim and Nancy Johnsen

John D. Johnson and Andrew Ortega

Cynthia King Schultz

Patrick and Debbie Kinsella

Sarah B. Kotchian and Robert O. Nellums

Scott and Jennifer Lindblom

Marlene Lucero

**Dr. Santiago Macias and
Dr. Angela Gallegos Macias**

Steven and Yvonne Maestas

Pamela Maestas

Jeffrey Wayne Marr

Dawn Marie Martin-Miller

Keith Matzen and Terri McCarty

Drs. Rohini and Jason McKee

Millie McMahon

continued on following page....

\$10,000 – \$14,999 ANNUALLY



continued from previous page....

The following donors wish to be listed by name only:

Michael and Elaine Montoya and Family

Ronald and Mary Moya

Holly Muller

Tim and Pam Nichols

James and Ann Peery

Gary A. Petersen, Jr.

Lang Ha Pham and Hy Tran

Larry E. Predika

Lisa Ramirez

Nelson Reinsch, Jr.

Keith and Shelley Rivera

P. Elena Sanchez Recovable Trust

Leah and Todd Sandman

Rick and Kerry Scott

Dr. David Scrase and Chantel Tarin Scrase

Maureen and Tony Sill

Sara S. Sokolowski and Christopher R. Wilson

James H. Spigel, MD and Dinorah Gutierrez

Jonathan and Jessica St. Cyr

Ernie Steele and Jamie Silva-Steele

The Strombergs

Keith and Paula Swalin

Todd and Kayci Trevino

Von and Elisa Trullinger

Elizabeth Clewett, PhD and Mark Unruh, MD

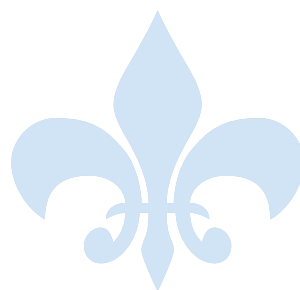
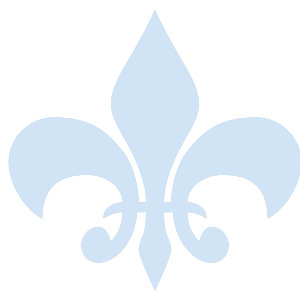
Richard D. Van Dongen

Michelle and Bill Vering

Leanne T. Weart

Kimberly and Benjamin Welch

Fourteen donors wish to remain anonymous



Planned Giving

MILLION DOLLAR LEGACY CIRCLE

Members have provided for gifts of \$1,000,000 or more.

We gratefully acknowledge the following donors who have chosen to support United Way of North Central New Mexico through estate gifts made prior to and during the Rising to Meet the Future Endowment Campaign.

Jim Asperger

Dr. Lance and Kathy Chilton

Henry Dodd and Kathie Hiebert-Dodd

Howard and Debra Friedman

Gerald and Barbara Landgraf

The Levenson Family

Sonya Priestly and Art Gardenswartz

MacKenzie Scott

Asher Smith

George and Jenean Stanfield

Alfred R. Vendegna

David and Susan Weymouth

Joy Zeiner

Three donors wish to remain anonymous





Farsighted donors wishing to continue their annual giving at the Tocqueville level after their lives create endowments of \$250,000 or more. At a four percent annual distribution rate, their giving should continue at \$10,000 annually or more. Members have already funded their endowments, are funding them over their lifetime, or have made legacy gifts to fund their endowments after their lifetimes.

Revathi A-Davidson and
Russ Davidson

Gerald Alldredge

John and Kathleen Avila

Marlene Brown

John Carey and
Julia Bowdich

Paul and Connie Cassidy

Bill and Karla Cates

Don and Dianne Chalmers

Dr. Lance and Kathy Chilton

Carol Mayo Cochran and
John Cochran

Dave Colton and
Mary Rawcliffe Colton

Pat and Debi Dee

Kristin Dion

Chris and Eva Dunkeson

Jerry and Jannie Dusseau

Rachel, Billy and
London Gupton

Jim and Kristen Hinton

Mark and Renée Humphrey

Kirby and Camille Jefferson

James and Ellen King

Gwendolyn Koch

Herman Mauney and
Marina deVos Mauney

James and Ann Peery

Rodney and Melanie Prunty

Ed Rivera and Lisa Webster

Kenneth and Anne Sapon

John H. and Kristine Stichman

Pamela Sullivan

Helen Wertheim

Ray and Catherine Ziler

Two donors wish to
remain anonymous

In Memoriam

It was with a heavy heart that we said goodbye to these donors and volunteers this past year:

Impact Investors and Tocqueville Society Donors:

Bill Anderson
Les Anderson
Roy Beene
Viola E. Florez Tighe
Bob Fosnaugh
Miriam Friedman
Sheilah Purcell Garcia
Dr. Keith W. Harvie

Dr. Art Hawkins
Dr. Kathy Hsi
Linda S. Marshall
Howard Mock
P. Elena Sanchez
Dr. Paula Schwartz
Dr. Wendell D. Weart

Other donors and volunteers:

Danielle Baltz
Edward Lee Bernal
Carl Bonilla
Phyllis B. Boyadjian
Robert Don Bridges, Jr.
Marcia Bumkens
Basil Leo Cafferty
William F. Chambers
Kimberly G. Champion
Edwin G. Christilaw
John Adam Farris
Clarence W. Filip, Jr.
Michele Fuller
Scott Alan Gray
Dr. Scott Habermehl
Charles A. Hall
Ann Hazlett

Dr. Richard L. Heideman
John D. Herrera, Jr.
Ninette Hobbs
I.B. Hoover
Elaine Isaacs
David John Johnson
Judith A. Jojola
Mike Kelly
Carol F. Kepler
Juanita M. Kilijanski
Edwin P. Lopez
Zoa Mattox
Dr. Janice E. Micali
Orelia J. Montoya
Bambi A. Nobles
Dr. Maynard A. Plamondon
Ronald Poland

Tad Pound
Douglas Kent Ray
Ray A. Reeder
Jennifer Jill Reisz Westlund
Timothy G. Reyes
Glenn L. Riggins
Connie Saxton
Beverly A. Sheridan
Robert M. St. John
Frances McNew Statler
John Steiner
William David Swartz
Cherry Swartz
Rex Throckmorton
Leslie Wadley
Janis Wainright
Alice F. White

Board of Directors

BOARD CHAIR

Janice Torrez

*Blue Cross and Blue Shield
of New Mexico*

SECRETARY/TREASURER

Raul Anaya

CliftonLarsonAllen

RIISING TOGETHER CO-CHAIR

Gabriella Blakey

Albuquerque Public Schools

COMMUNITY INVESTMENT COUNCIL CHAIR

Gabriel “Gabe” J. Castro

*Presbyterian Healthcare
Services*

BOARD CHAIR ELECT

Robin Divine

*TriCore Reference
Laboratories*

PUBLIC POLICY CHAIR

Kelcy Flanagan

*Flanagan Investment
Real Estate*

CAMPAIGN CHAIR

William “Billy” Gupton

*Merrill Lynch, Pierce,
Fenner & Smith Inc.*

MARKETING CHAIR

Emily Howard

Cheetah Strategy

IMMEDIATE PAST BOARD CHAIR

James Peery

*Sandia National Laboratories
Director Emeritus*

PRESIDENT AND CEO

Rodney Prunty

*United Way of
North Central New Mexico*

MEMBER AT LARGE

Lori Waldon

KOAT

Amanda Aragon

New Mexico KidsCan

Mary Armijo

Lovelace Medical Center

Tom Briones

Briones Business Law

David A. Buchanan

U.S. Bank

H. Noelle Chavez

H2 Academic Solutions

Linda Cooper

Bank of Albuquerque

Elaine Darnell

*Merrill Lynch
Wealth Management*

Bridget Dixson

*Santa Fe Chamber
of Commerce*

Jesse Dompereh

State Farm

Andres Garcia

Capra Bank

John Abreu Grassham

Abreu Strategies

Nicole Johnny

Raven Indigenous Capital

Monica Jojola

MONTECH, INC

Barbara J. “BJ” Jones

Anne Kain

Century Bank

Lauren Madigan

*Presbyterian Healthcare
Services*

Sal Perdomo

Titan Development

Barbara Rodriguez

University of New Mexico

Julie Rowey

PNM Resources

Dr. Nireata Seals

CNM

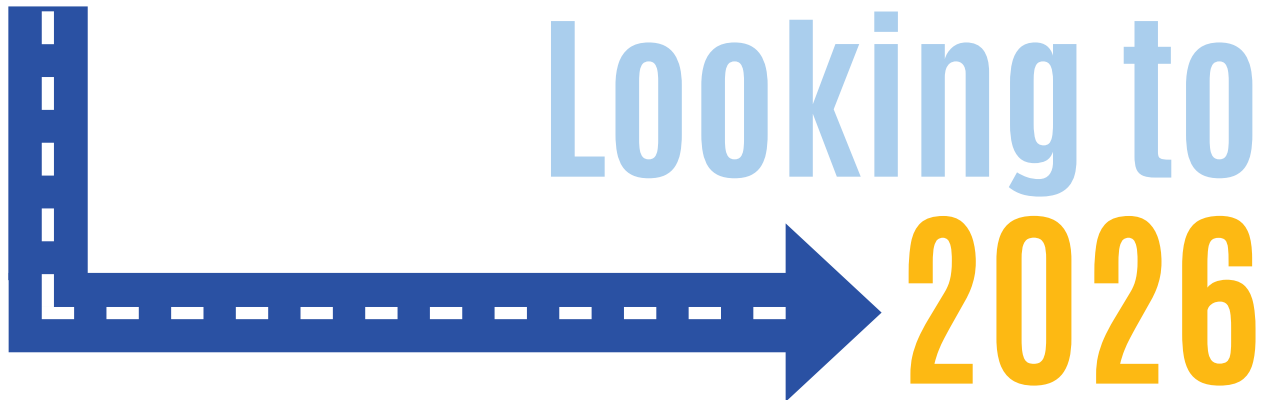
MEMBER EMERITUS

Sherman McCorkle

*Sandia Science & Technology
Development Corp.*



UNITED WAY
North Central New Mexico



As we look ahead to the coming year, we are filled with hope and excitement for the future. Here are some of our upcoming endeavors that we are looking forward to launching or continuing to implement within the next year.

ALICE in New Mexico

We are excited to embark on the ALICE initiative, focusing on those who are Asset Limited, Income Constrained, and Employed. The ALICE Data Report (*available in September 2025*) will provide robust data for New Mexico, allowing us to develop targeted strategies to address financial hardship across the state.

Career-Connected Learning Initiative in Bernalillo County

In partnership with Albuquerque Public Schools (APS), we are launching the Academies of Albuquerque. This initiative will provide every student with access to career-focused learning and real-world opportunities, ensuring they graduate ready for college, careers, and life.

Financial Empowerment Centers in Santa Fe County

Our Financial Empowerment Centers will offer free financial coaching to community members, focusing on asset building, banking access, consumer financial protection, and financial education and counseling.

Resilient Communities Initiative

Our Resilient Communities initiative showcases UWNCNM's innovative trust-based philanthropy projects. This initiative focuses on developing true partnerships with community agencies and the transformative impact of trust-based grant-making.

United is the Way

Our message, "United is the Way," is more than just a slogan. It is a call to action, inviting all people and communities to come together and make a bigger impact. Becoming a donor will help sustain our work and ensure that we can continue to support families in New Mexico.



Scan this QR Code to sign up for our newsletter today:





UNITED WAY
North Central New Mexico

2340 Alamo Ave SE, Suite 200 | Albuquerque, NM 87106
(505) 247-3671 | uwnnm.org